




The ACHS Clinical Indicator Program (CIP) is **the world's largest dedicated** clinical indicator data collection and reporting service.

 More than **650** participating healthcare organisations

 **330+** clinical indicators

 Endorsed and developed by over **40** Australasian healthcare colleges, societies, and associations

 **22** specialty medical disciplines

There are 22 Clinical Indicator (CI) sets and over 330 CIs for healthcare organisations to choose from in the ACHS Clinical Indicator Program that relates to the health services they provide and are appropriate to their size and type of organisation.



Anaesthesia and Perioperative Care



Cancer Care



Day Patient



Emergency Medicine



Gastrointestinal Endoscopy



Geriatric Care



Gynaecology



Hospital in the Home



Hospital-Wide



Infection Control



Intensive Care



Internal Medicine



Maternity



Medication Safety



Mental Health



Ophthalmology



Oral Health



Paediatrics



Pathology



Radiation Oncology



Radiology



Rehabilitation Medicine

The ACHS CIP provides international context and benchmarking for your healthcare organisation in India.



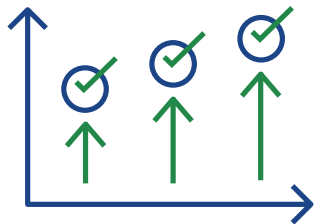
Provides benchmarking to inform comparison



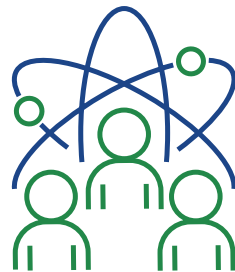
Highlights areas for further analysis and improvement



Provides assurance of organisational performance



Supports evaluation of service performance for ongoing improvement



Facilitates quality and safety communication between multi-disciplinary groups



Helps organisations understand their responsibility in safety and quality

How does the Clinical Indicator Program (CIP) work?

Submit data and manage your account on our easy-to-use online submission tool

Submit clinical indicator data every six months

Access to detailed reports and dashboards for each indicator benchmarked against your peers

Access our annual Australasian Clinical Indicator Report (ACIR)