

HOSMAC





PLANNING INFRASTRUCTURE FOR ICU



CAHO, JUNE 2121



PLANNING PREMISES

- Business plan / functional programme
- Advances – admissions for critical cases
- Optimal unit sizing
- Classification
- Isolations, types
- Location

Medical
Surgical
Cardiac Care, CVTS
Respiratory
Transplant
Trauma
Neuro, Neuro Sx
Burns
NICU

TECHNOLOGY

- Windows
- Pendants
- Electrical – power & data, code blue
- Lighting
- HVAC
- Plumbing
- MGPS



SPACE PROGRAM

					Area	Net area / unit	No of units	Total Net Area	Comments
		Administrative / Control						48.3	
241	Waiting					16.8	1	16.8	
	(sitting area	12	places @	1.4	16.8)			
242	Toilets - Public					4.5	1	4.5	
243	Counselling Room					9.0	1	9.0	
244	Grieving Room					9.0	1	9.0	
245	Office - Intensivist Room					9.0	1	9.0	



SPACE PROGRAM

				Area	Net area / unit	No of units	Total Net Area	Comments
	Patient care						262.7	
246	ICU bed spaces				211.5	1	211.5	
	(patient area	11	places @	18.0	198.0)			
	(staff work base	6	places @	2.3	13.5)			
247	Isolation Rooms				28.5	1	28.5	PE
	(gowning/hand washing/utility lobby				6.0)			
	(bedroom area				18.0)			
	(en-suite toilet - assisted				4.5)			
248	Toilet - assisted				4.5	1	4.5	
249	Nurse Work Station				18.2	1	18.2	
	(workstation	3	places @	3.8	11.4)			
	(central monitoring station	1	place @	3.8	3.8)			
	(Medicine & crash carts, refrigerator	3	places @	1.0	3.0)			



SPACE PROGRAM

				<i>Area</i>	<i>Net area / unit</i>	<i>No of units</i>	<i>Total Net Area</i>	<i>Comments</i>
		Shared Support					109.3	
2410		Equipment Bay			18.0	1	18.0	
2411		Medications & Stat Lab			6.0	1	6.0	
2412		Clean Utility			8.0	1	8.0	
2413		Dirty Utility			8.0	1	8.0	
2414		Nourishment Station			8.0	1	8.0	
2415		Staff Room			15.0	1	15.0	<i>ensuite toilet with shower</i>
2416		Multi-purpose Room			10.8	1	10.8	
2417		House Keeping Closet			2.5	1	2.5	
2418		AHU Rooms			12.0	2	24.0	
2419		Toilets - staff			4.5	2	9.0	

ICU – CUBICLES / BAYS





DRY & WET PENDANT



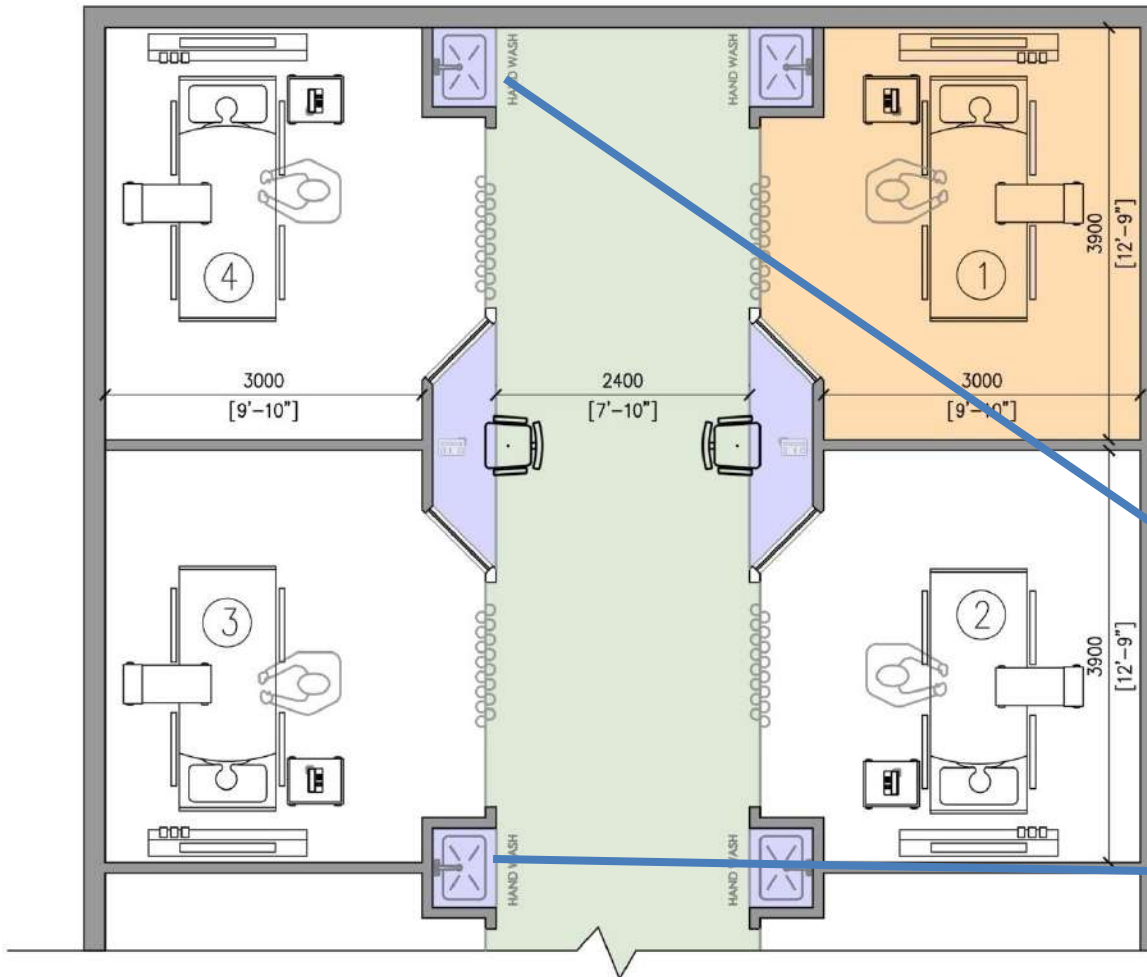


ICU – CUBICLES / BAYS





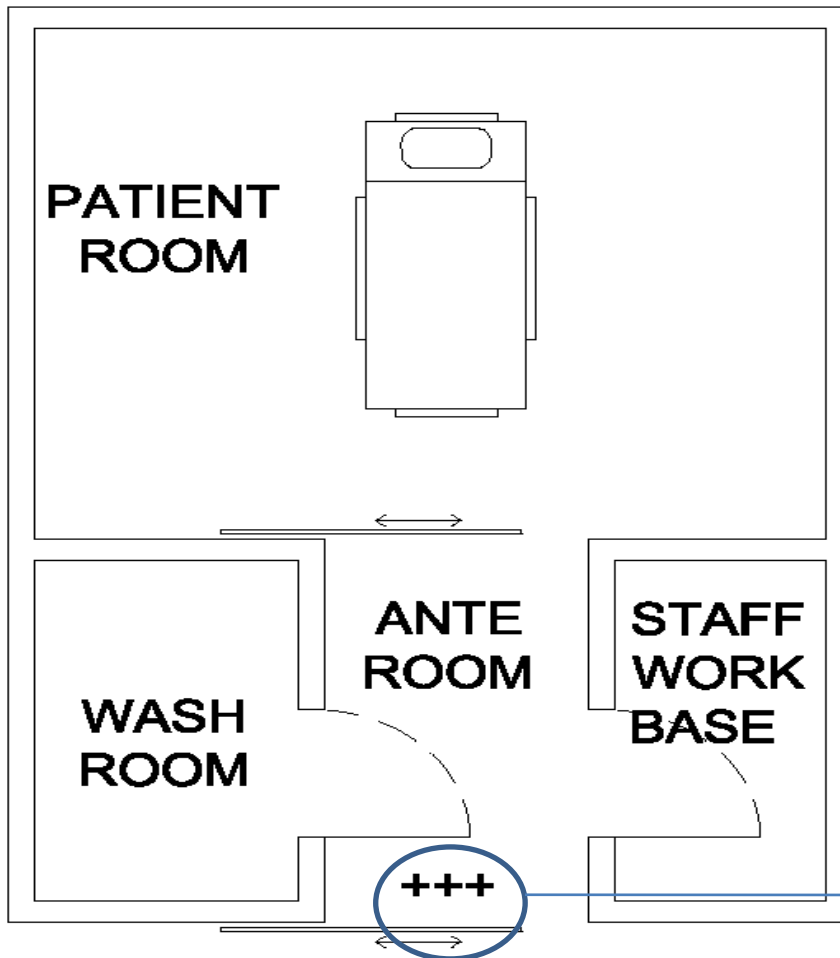
ICU



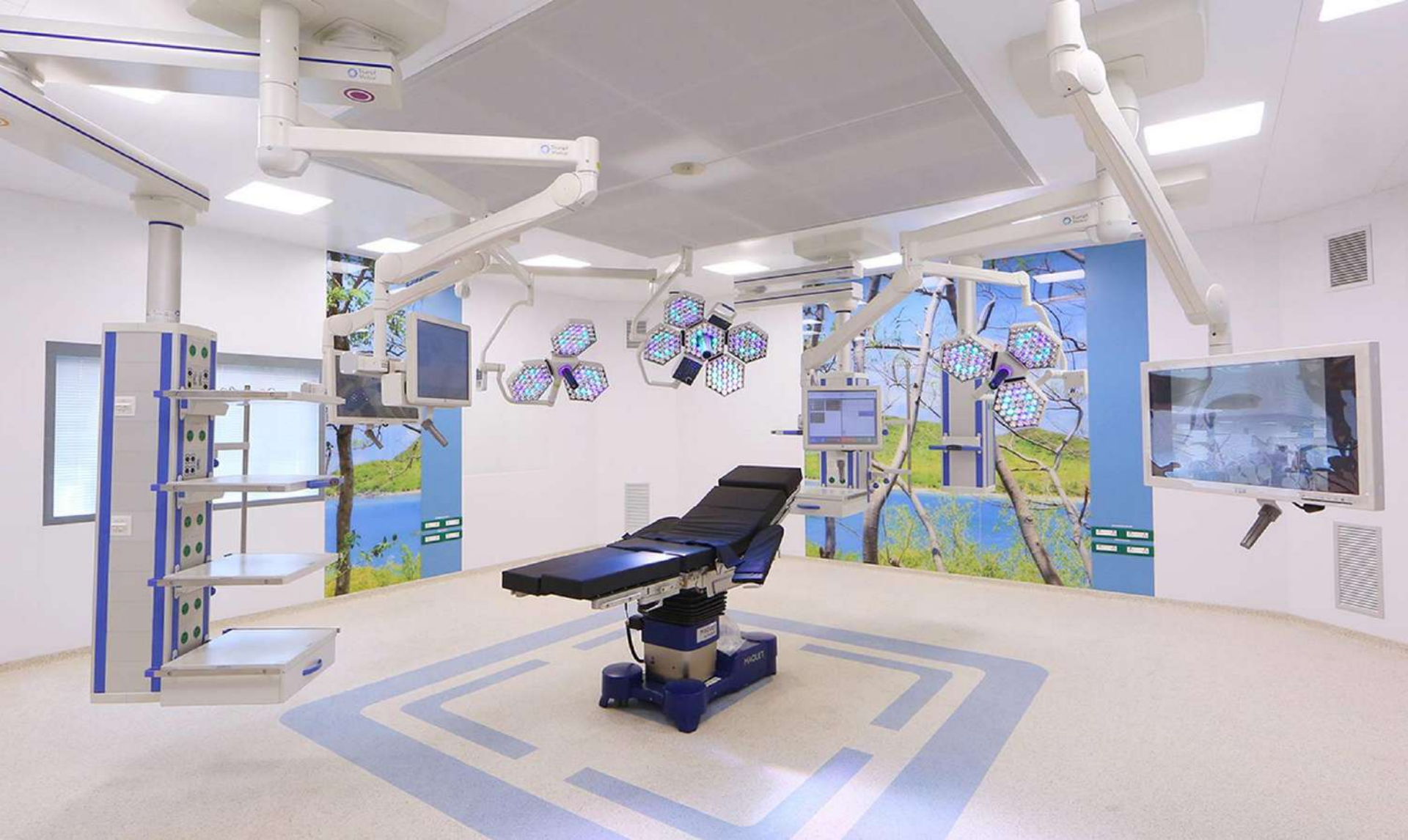
ICU
HAND
WASH



COMBINED ISOLATION



AT THE HIGHEST
PRESSURE



HOSMAC

QUESTIONS?

sameer.mehta@hosmac.com